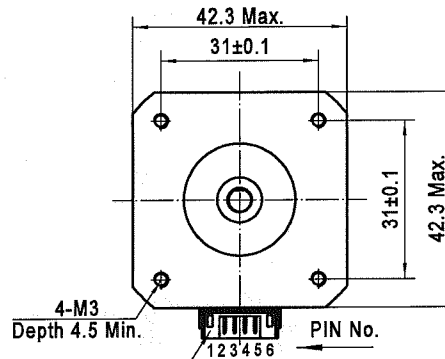
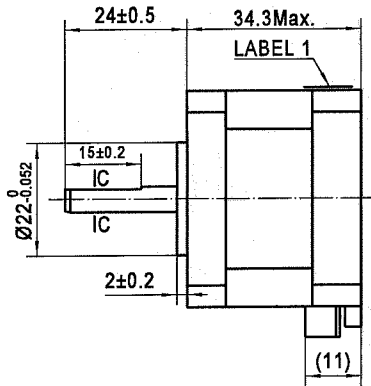
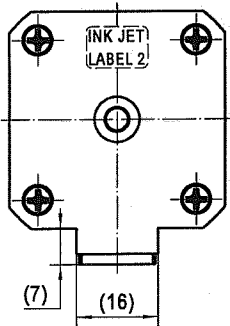
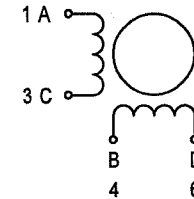


4611110008895



JST S6B-PH-K-S(LF)(SN)

接线图
Wiring Diagram



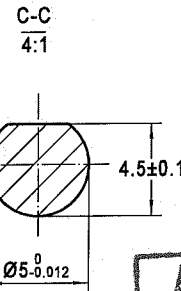
励磁顺序 vs. 旋转方向
Exciting Sequence vs. Direction of Rotation

STEP	A	B	C	D	
1	+	+	-	-	CW
2	-	+	+	-	
3	-	-	+	+	CW
4	+	-	-	+	

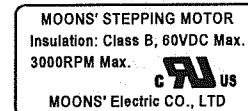
从安装面看为顺时针方向
Clockwise view from mounting side.

规格 Specifications

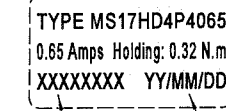
1. 相数 Number of Phase	2
2. 步距角 Step Angle	1.8°
3. 额定电压 Rated Voltage	5.655 V DC
4. 额定电流 Rated Current	0.65 Amp
5. 保持力矩 Holding Torque	0.32 Nm Typ. (Two phase on/ rated current)
6. 相电阻 Phase Resistance	8.7 ohm±10% (20°C)
7. 相电感 Phase Inductance	15.4 mH±20% (1kHz 1V rms)
8. 转子惯量 Rotor Inertia	38 g.cm ²
9. 电机重量 Motor Weight	0.21 Kg
10. 绝缘等级 Insulation Class	B(130°C)



铭牌1 Label1 Detail



铭牌2 Label2 Detail



Work Order 加工单号 Date Format 日期格式

REV.	版本记录 REVISION RECORD	DATE	UNLESS OTHERWISE SPECIFIED	NAMES	SIGNATURE	DATE	Type: MS17HD4P4065	Rev. E	SCALE 1:1	Sheet 1 of 1
E	无UL铭牌 Update nameplate	2017.4.24	Unit: mm 第一角画法 FIRST ANGLE METHOD	批准 Approve	[Signature]	5.9	MOONS'	Hybrid Stepping Motor	Shanghai MOONS' Electric Co., Ltd.	This document is released for information only. Its reproduction in whole or in part or its dissemination to third parties is prohibited. All trademarks and registered trademarks appearing on this document are the property of their respective owners.
D	306mNm Min, change the nameplate	2013.01.24	公差 未注线性与角度尺寸公差 Tolerances for linear and angular dimensions without individual tolerance indications	标准化 Standard	[Signature]	5.9				
C	340 mNm Min.	2012.11.07	GB/T 1804-m eqv ISO 2788-1: m	工艺 Technology	[Signature]	5.9				
B	9.1 ohm, 16.5mH, 5.915V, 310mNm	2012.3.12	公差 未注形状与位置尺寸公差 Geometrical tolerance for features without individual tolerance indications	审核 Check	[Signature]	5.9				
A	原始版本 Original revision	2011.7.18	GB/T 1184-K eqv ISO 2768-2: K	设计 Design	甘建军	2017.4.24				