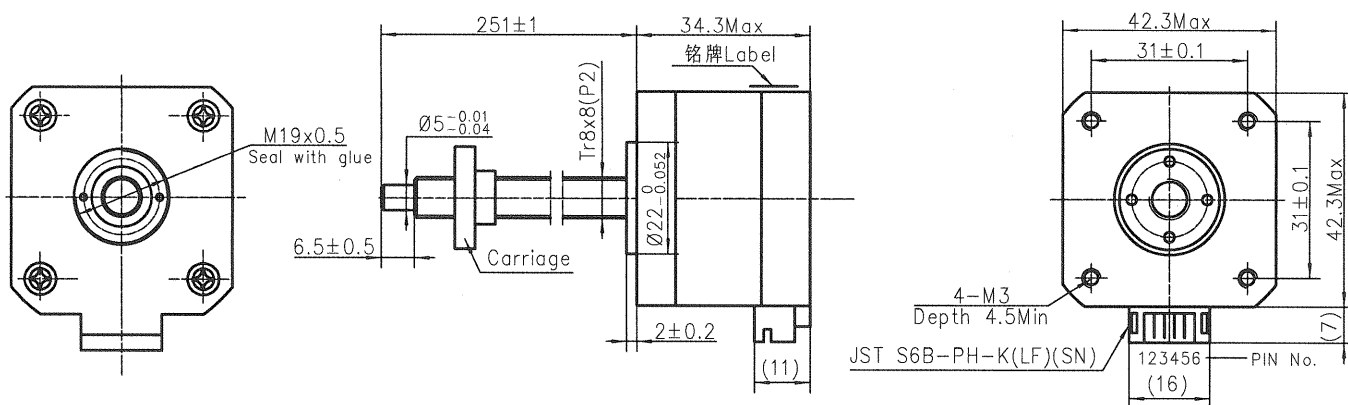
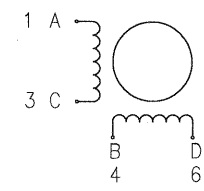


4611110012583



接线图
Wiring Diagram



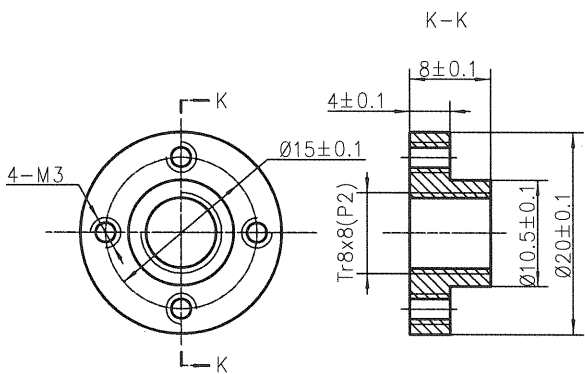
励磁顺序vs.旋转方向
Exciting Sequence vs. Direction of Rotation

STEP	A	B	C	D	
1	+	+	-	-	CCW ↑
2	-	+	+	-	
3	-	-	+	+	
4	+	-	-	+	

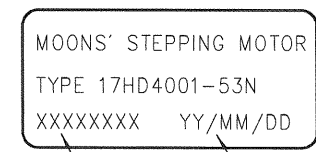
从安装面看为顺时针方向
Clockwise view from mounting side

规格 Specifications

1. 相数 Number of Phase	2
2. 步距角 Step Angle	1.8°
3. 额定电压 Rated Voltage	12V DC
4. 额定电流 Rated Current	0.4Amp
5. 保持力矩 Holding Torque	0.24N.m Min.(Two phase on/rated current)
6. 相电阻 Phase Resistance	30ohm±10%(20°C)
7. 相电感 Phase Inductance	45mH±20%(1kHz 1V rms)
8. 转子惯量 Rotor Inertia	38g.cm ²
9. 电机重量 Motor Weight	200g
10. 绝缘等级 Insulation Class	B(130°C)



铭牌 Label Detail



Work Order 加工单号 Date Format 日期格式

- ★ 备注 Comments
1. 使用黑端盖
Use black endcaps.
 2. 后盖装锁紧块
Assemble a screw pro-load nut in rear end cap.



REV.	版本记录 REVISION RECORD	DATE	UNLESS OTHERWISE SPECIFIED	NAMES	SIGNATURE	DATE	Type: 17HD4001-53N	Rev.A	SCALE 1:1	Sheet 1 of 1
A	原始版本 Original revision	2014.04.15	Unit: mm 第一角画法 FIRST ANGLE METHOD 未注线性与角度尺寸公差 Tolerances for linear and angular dimensions without individual tolerance indications GB/T 1804-m eqv ISO 2768-1:m 未注形状与位置尺寸公差 Geometrical tolerance for features without individual tolerance indications GB/T 1184-K eqv ISO 2768-2:K	批准 Approve		14.4.16	MOONS'	Hybrid Stepping Motor		
				标准化 Standard		7.11	Shanghai Moons' Electric Co., Ltd.			
				工艺 Technology		4.15	This document is released for information only. Its reproduction in whole or in part or its dissemination to third parties is prohibited. All trademarks and registered trademarks appearing on this document are the property of their respective owners.			
				审核 Check		4.15				
				设计 Design	马音一	2014.04.15				